



**COMPARATIVE STUDY OF HEXANE EXTRACT FOR VOLATILE AND NON VOLATILE COMPONENTS OF LEAVES AND RHIZOMES OF *ACORUS CALAMUS* LINN. USING HIGH PERFORMANCE THIN LAYER CHROMATOGRAPHY (HPTLC)**

AS Bisht\*, Monika Chauhan, A Joshi, Y Joshi, A Dimri, V Singh, D. Juyal

Himalayan Institute of Pharmacy and Research, Atak Farm, Rajawala, Dehradun – 248007

The present communication attempts to evaluate the comparative study of leaves and rhizomes of *Acorus calamus* Linn. (Family; Araceae) using High Performance Thin Layer Chromatography (HPTLC). Since the plant contains various volatile and non-volatile components so paper advocates the quantitative study using hexane extract. *Acorus calamus* Linn. is a well known medicinal plant in traditional medical systems having various ethno-pharmacological uses. As the official source of the plant is roots and rhizomes, but here study had been done comparatively with leaves. Previously leaves of *Acorus calamus* were not regarded as useful part of plant, but recently there is growing interest in leaves of the said plant. The leaves are considered to possess various activities such as an insect repellent, when cut up and kept with grain storage; anti-hyperlipidemic; anti-diabetic; antipsychotic; anti-inflammatory and analgesic. As there is no detailed work reported in leaf constituents of the plant, therefore the study revealed specific quantitative HPTLC data for the plant for future standardization work. HPTLC analysis of both leaves and rhizomes showed the presence of Asarone,  $\beta$ - sitosterol, lupeol and Ursolic acid when matched with marker compounds.

**Key words:** *Acorus calamus* Linn., HPTLC, standardization, Marker compounds

## INTRODUCTION

HPTLC is an advanced versatile chromatographic technique for quantitative analyses with high sample throughput and is complementary to HPLC/GLC. It provides a chromatographic drug fingerprint. It is therefore suitable for monitoring the identity and purity of drugs. The HPTLC technique in standardization is required for quantification of marker components by area under curve, determination of the accurate  $R_F$  values for the marker components, determination of the purity of the substance (peak purity) and determination of the absorption maxima of the substance. *Acorus calamus* Linn. is semi-aquatic herb with creeping rhizomes and sword shaped long leaves, found nearly marshy places, river banks and lake.<sup>1</sup> It is up to 6 feet tall, aromatic, sword-shaped leaves bearing small yellow/green flowers and branched rhizome. It is widely distributed throughout India and Ceylon, in marshes, wild or cultivated, ascending the Himalayas up to 6000 feet in Sikkim, marshy tracts of Kashmir and Sirmoor in Manipur and Naga Hills.<sup>2</sup> The roots and rhizomes are used medicinally since ancient times. They

possess antispasmodic, carminative and anthelmintic properties and are also used for the treatment of epilepsy, mental ailments, chronic diarrhoea, dysentery, bronchial catarrh, fever and glandular and abdominal tumours.<sup>3,4</sup> They are also employed for kidney and liver troubles, rheumatism, sinusitis, eczema and anti-cellular activities.<sup>5</sup> Recently roots and rhizomes identified as antibacterial agent against fish pathogen<sup>6</sup> and also shows insulin sensitizing activity.<sup>7</sup> Whereas mature green leaves exhibit various activities including insect repellent, when cut up and stored with dry foods<sup>8</sup>, anti-hyperlipidemic activity, anti-diabetic activity<sup>9</sup>, antipsychotic activity<sup>10</sup>, antimicrobial and analgesic actions.<sup>11</sup> Recently methanolic and acetone extracts of *Acorus calamus* leaves have been shown to possess CNS depressant activity, which can be utilized in future for anticonvulsant activity.<sup>12</sup> The water extract of leaves of *Acorus calamus* have shown anti-inflammatory activity.<sup>13</sup>

## MATERIAL AND METHODS

The leaves were wildy collected from catchment of Bhimtal Lake in Uttarakhand located in North India, proclaimed as to have ethanopharmacological

### For Correspondence

ajay86\_pharma@yahoo.com

importance. It was preserved in 70% ethyl alcohol for various other studies.

**Sample preparation:** Samples of leaves and rhizomes of *Acorus calamus* Linn. were prepared by using stock solution of hexane extract, obtained from cold percolation. They had been prepared as a 10 mg/ ml of stock solution.

**Stationary phase:** Pre-coated silica gel 60 F254 plate (E. Merck) in uniform thickness 0.2 mm

**Sample applicator:** The CAMAG Linomate-5 applicator for application of sample in the form of narrow bands, particularly analysis of mixture compound like plant extracts. The CAMAG linomate-5 uses the spray-on technique for applying samples on to the chromatogram layer as narrow band this permits the application of larger sample volume than is possible with contact sample transfer. A 500 µl syringe can be used instead of the standard 100 µl dosage syringe; another advantage of the linomate-5 is its self adjusting plate support. It allows the use of layers differing in thickness without re adjusting the spray nozzle. This feature makes attractive for the preparative application.

**Sample application:** 10 mg/ml of plant hexane extract was prepared 20 µl of this solution was applied on the plate, and 1mg/ml standard marker solution was prepared and different amount like 10 µg, 20 µg, and 30 µg and was applied.

**Chromatography:** The plate was eluted with respective mobile phase in CAMAG twin through chambers. The chamber was saturated with respective mobile phase saturation plate (E. Merck) of uniform thickness 0.2 mm was used for all the HPTLC analysis.

**Video documentation:** the eluted plate was analyzed under CAMAG Reprinter-3 for the UV visualization at different  $\lambda$  value like 254 nm, 366 nm

**Scanning of tracks:** The eluted plate have different tracks of elute which are densitometrically scanned using CAMAG Scanner-3 at the respective wavelengths or at the multi wavelength for the crude extract gives area under curve for respective component present in the extract and the amount of the component would be quantify.

## RESULT AND DISCUSSION

Result obtained from current study in HPTLC profile of hexane extract of leaf and rhizomes by CAMAG HPTLC System with wincats-3 programming software; video documentation of plates by CAMAG Reprinter-3 video documentation under UV 254 nm, 366 nm, and in visible light after post-derivatization with anisaldehyde sulphuric acid reagent. **TLC plate (1)** using Toluene: ethyl acetate: 9:1 as mobile phase in case of Lupeol,  $\beta$ -sitosterol, and Ursolic acid (which are non- volatile components) were done. Observations are shown below. Another **TLC plate (2)** run in case of asarones (volatile components) with solvent system toluene: ethyl acetate: 8.5:1.5 as mobile phase.

### Detection of TLC plate (1)

TLC plate (1) scanning by CAMAG scanner-3  $R_f$  value of the marker compounds which are matched with the sample tracks and identified Lupeol,  $\beta$ -sitosterol and Ursolic acid were present in both tracks. These compounds are generally non-volatile components of the plant which were quantified by the HPTLC method.

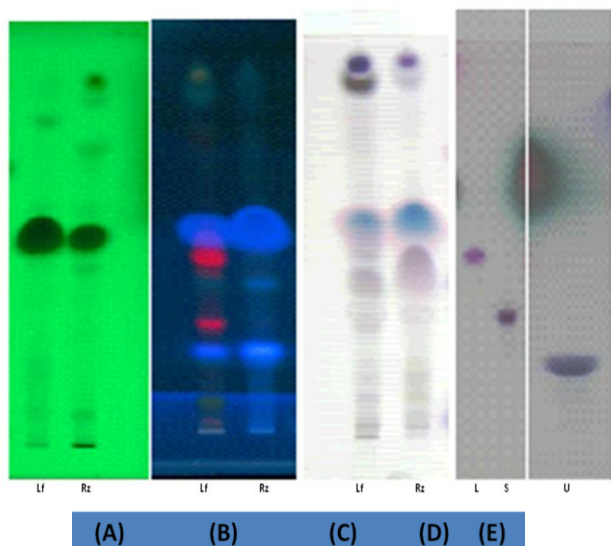
**Detection of TLC plate (2):** Plate (2) scanned by CAMAG scanner-3 and the major volatile compound Asarone was evaluated by densitometric scanning profile of tracks showing below for Leaf and Rhizome of plant *Acorus calamus* Linn. The marker compound ( $\alpha$ -asarone) were used for quantification.

Markers	Lupeol	$\beta$ -Sitosterol	Ursolic acid
Sample $R_f$	0.45	0.31	0.18
Leaf	+	+	+
Rhizome	+	+	+

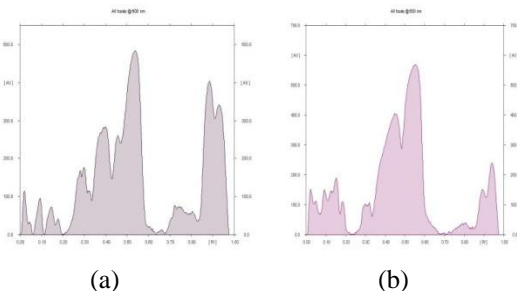
**Table 1:** Screening of compounds in plate (1) by HPTLC, (+) shows presence and (-) shows absence

Track	Vial	Sample/ Conc.
Lf	1	10µl from 10 mg/ml stock solution
Rz	2	10µl from 10 mg/ml stock solution
B	3	10µl from 1mg/ml stock solution
Lu	4	10µl from 1 mg/ml stock solution
Ur	5	10µl from 1mg/ml stock solution

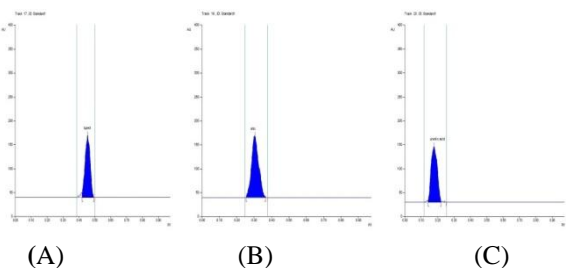
**Table 2:** Sample application on TLC plate



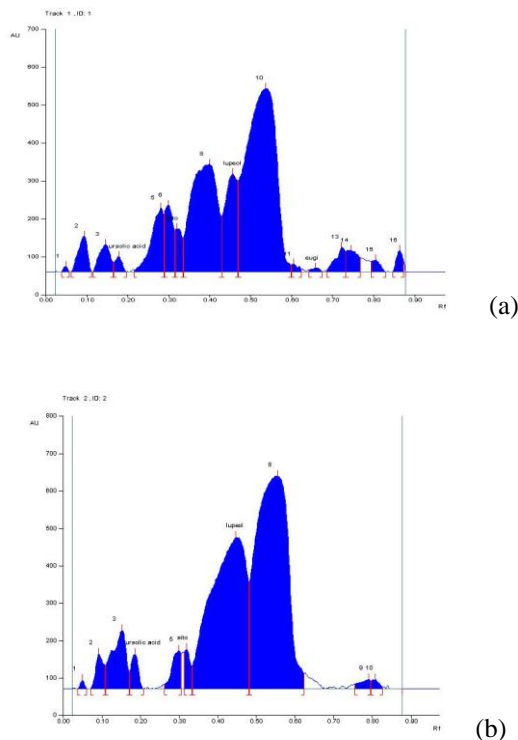
**Fig.1:** HPTLC profile of Hexane extract of plant *Acorus calamus* Linn sample Leaf extract(Lf) and Rhizome extract (Rz) (A) under 254 nm (B) Under 366 nm (C) Under visible light, (D) Lupeol [L] and β-Sitosterol [S], (E) Ursolic acid [U]



**Fig.2:** HPTLC scan profile AUC vs R<sub>f</sub> for plant sample *Acorus calamus* Linn, (a) Leaf profile (b) Rhizome profile at 600 nm



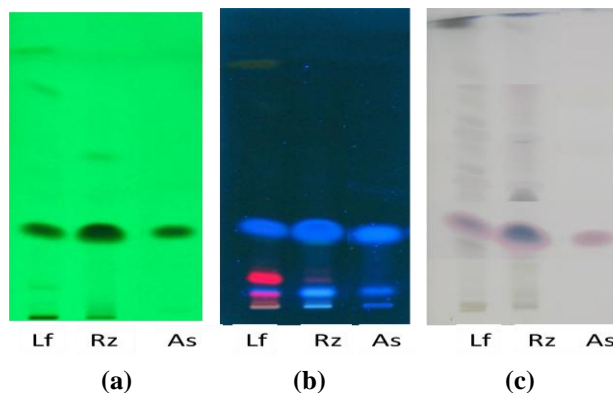
**Fig.3:** HPTLC scan profile of Plate (1) showing AUC vs R<sub>f</sub> for marker compound, (A) Lupeol, (B) β-Sitosterol, (C) Ursolic acid.



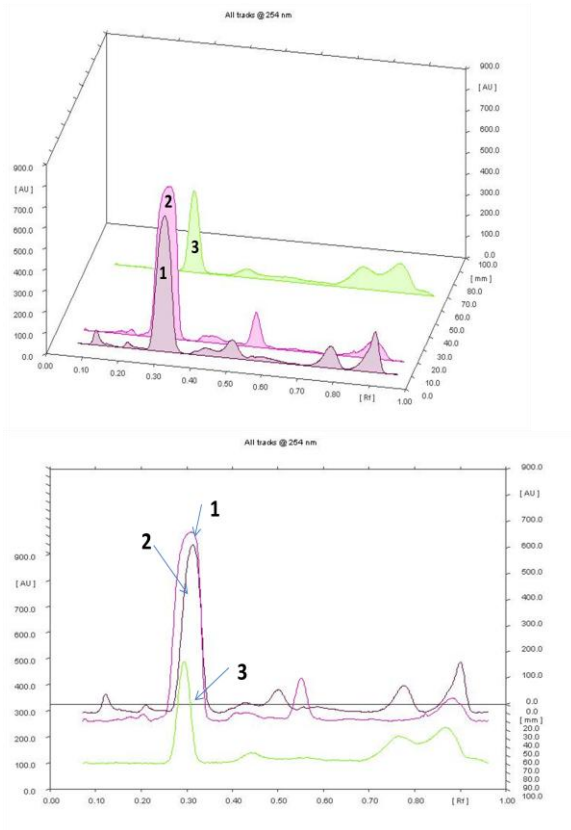
**Fig.4:** HPTLC densitometric scan profile for plant sample *Acorus calamus* Linn, (a) Leaf profile (b) Rhizome profile at 600 nm.

Track	Vial	Sample/ Conc.
Lf	1	10µl from 10 mg/ml stock solution
Rz	2	10µl from 10 mg/ml stock solution
Asarone	3	10µl from 1mg/ml stock solution

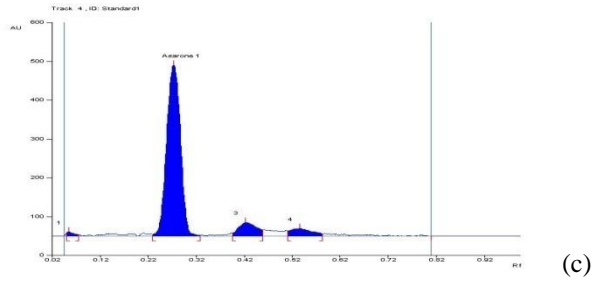
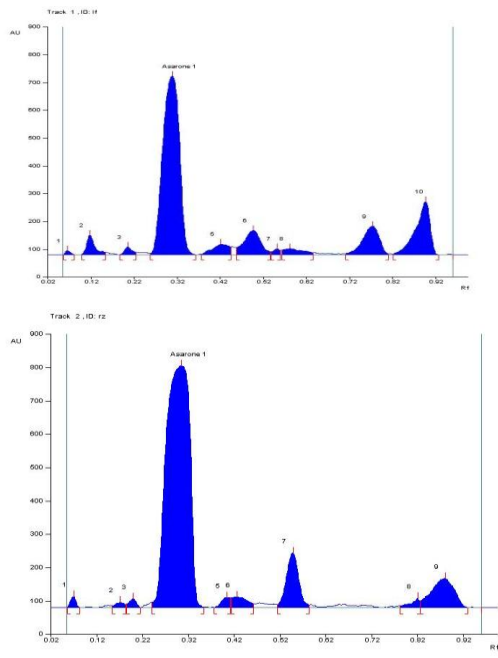
**Table 3:** Sample application on TLC plate (2)



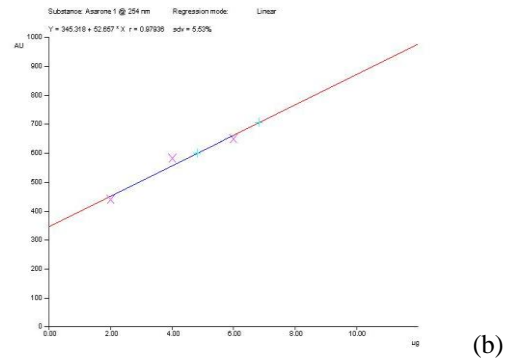
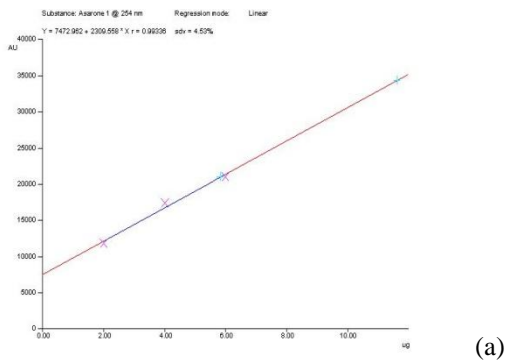
**Fig.5:** Plate (2) HPTLC Profiles of plant *Acorus calamus* Linn (a) under UV 254 nm (b) under UV 366 nm (c) under UV Visible light after spray



**Fig.6:** Plate (2) U.V. scans profile both filled and line for plant samples and marker at 254 nm. Here 1= Leaf extract; 2=Rhizome extract; 3=Asarone (marker compound).



**Fig.7:** Plate (2) (a) Densitometric scan profile for Leaf extract (b) Densitometric scan profile for Rhizome extract (c) Densitometric scan profile for Marker compound (Asarone) all at 254 nm



**Fig.8:** Plate (2) graph showing Linearity (a) wrt area of the peak (b) wrt height of the peak; wrt=with respect to

**Percent non-volatile content in plant *Acorus calamus* Linn. (Plate 1)**

Sample	AMT (µl)	AUC	AP	% CP
Lf	10	1053.30	262.14ng	0.0065
Rz	10	5552.95	1.382 µg	0.138

**Table 4:** Percent Lupeol present in plant *Acorus calamus* Linn

Sample	AMT ( $\mu$ l)	AUC	AP	% CP
Lf	10	2203.29	434.13 ng	0.011
Rz	10	628.11	123.76 ng	0.0125

**Table 5:** Percent  $\beta$ - sitosterol presents in plant *Acorus calamus* Linn

Sample	AMT ( $\mu$ l)	AUC	AP	% CP
Lf	10	340.49	82.19 ng	0.011
Rz	10	10008.33	243.41 ng	0.21

**Table 6:** Percent Ursolic acid present in plant *Acorus calamus* Linn

#### Percent Volatile content in plant *Acorus calamus* Linn. (Plate 2)

Sample	AMT ( $\mu$ l)	AUC	AP	% CP
Lf	10	20973.73	5.846 $\mu$ g	0.146
Rz	10	34312.61	11.62 $\mu$ g	1.162

**Table 7:** Percent Asarone present in plant *Acorus calamus* Linn.

AMT=Amount applied from 10 mg/ml sample solution;  
AUC= Area under curve; CP=content in plant; AP= Amount present

#### CONCLUSION

Comparative standardization, through High performance thin layer chromatography (HPTLC), suggested that leaf and rhizomes of *Acorus calamus* have marked variation in their both volatile and non volatile chemical constituents. The produce figure of the various chemical constituents in both leaf and rhizomes could be further referred for future research work on the same plant. The study revealed specific identities for the plant, which will be utilize in identification, as a control to check adulterants and for future standardization work.

#### REFERENCE

- Rastogi RP, Mehrotra BN. *Acorus calamus*. Compendium of Indian medicinal plants.1980, Vol 3, 11.
- Rao MM, Meena AK, Singh A and Kumari S. Physicochemical and preliminary phytochemical studies on the rhizomes of *Acorus calamus* Linn.

International Journal of Pharmacy and Pharmaceutical Sciences. 2010; 2 (2) 130-131.

- Chopra R N, Nayar S L, Chopra I C., Glossary of Indian medicinal plants. NISCIR; CSIR; Delhi; 2002.
- Nadkarni KM., Indian Materia Medica, 3<sup>rd</sup> Edn., Vol. I, Popular Prakashan Pvt. Ltd. Bombay; 1982; 1211-1212.
- Agarwal SL, Dandia PC, Singh KP, Arora RB. A note on the preliminary studies of certain pharmacological actions of *Acorus Calamus* L. J. Am. Pharm. Assoc. 1956; 45; 655-656.
- Bhuvanewari R and Balasundaram Chellam. Anti-bacterial activity of *Acorus calamus* and some of its derivatives against fish pathogen *Aeromonas hydrophila*. Journal of Medicinal Plants Research. 2009; 3(7); 538-547.
- Hao-Shu Wu, Di-Feng Zhu, Chang-Xin Zhou, Chu-Rui Feng, Yi-Jia Lou, Bo Yang, Qiao-Jun He. Insulin sensitizing activity of ethyl acetate fraction of *Acorus calamus* L. in vitro and in vivo, Journal of Ethnopharmacology. 2009; 123 (2); 288-292.
- Chan Park, Soon-Il Kim, Young-Joon Ahn. Insecticidal activity of asarones identified in *Acorus gramineus* rhizome against three coleopteran stored-product insects. Journal of Stored Products Research, 2003; 39; 333-342.
- Reshma S, Sushma A. Hypolipidemic activity of *Acorus calamus* L.in rats. Fitoterapia, 2002; 73 (6); 451-455.
- Pandy V, Jose N, Subhash N. CNS activity of methanol and acetone extracts of *Acorus calamus* leaves in mice. J. Pharmacol. Toxicol. 2009; 4; 79-86.
- Devi AS, Ganjewala D. Antimicrobial activity of *Acorus calamus* (L.) rhizomes and leaf extract. Acta Biologica Szegediensis. 2009; 53 (1); 45-49.
- VengadeshPrabu K, George T, Vinoth KR, Nancy J, Kalaivani M, Vijayapandi P. Neuromodulatory effect of *Acorus calamus* leaves extract on dopaminergic system in mice. International Journal of Pharm Tech Research. 2009; 1(4); 1255-1259.

13. Hyeri Kim, Tae-Ho Han, Seong-Gene Lee. Anti-inflammatory activity of a water extract of *Acorus calamus* L. leaves on keratinocyte HaCaT cells. *Journal of Ethnopharmacology*. 2009; 122 (1); 149-156.
14. R. Oprean, Tamas M, Roman L. Comparison of GC-MS and TLC techniques for asarone isomers determination. *Journal of Pharmaceutical and Biomedical Analysis*. 1998; 118 (1); 227-234.
15. Selçuk SS, Bahar M, Mericli AH. The flavonoid compounds from the leaves of *Acorus calamus* growing in Turkey. *Acta Pharmaceutica Scientia*. 2009; 51 (1). 83-85.
16. World Health Organization: Quality control methods for medicinal plant materials. Published by WHO; Geneva; 1998.

Received	18 <sup>th</sup> April 2014
Revised	12 <sup>st</sup> May 2014
Accepted	25 <sup>th</sup> June 2014

J. App. Pharm. Res., 2 (2); 2014: 22 – 27